

Canon

Because It Counts

42" HIGH SPEED COLOUR PRINT PRODUCTION

Océ ColorWave 910 Printer

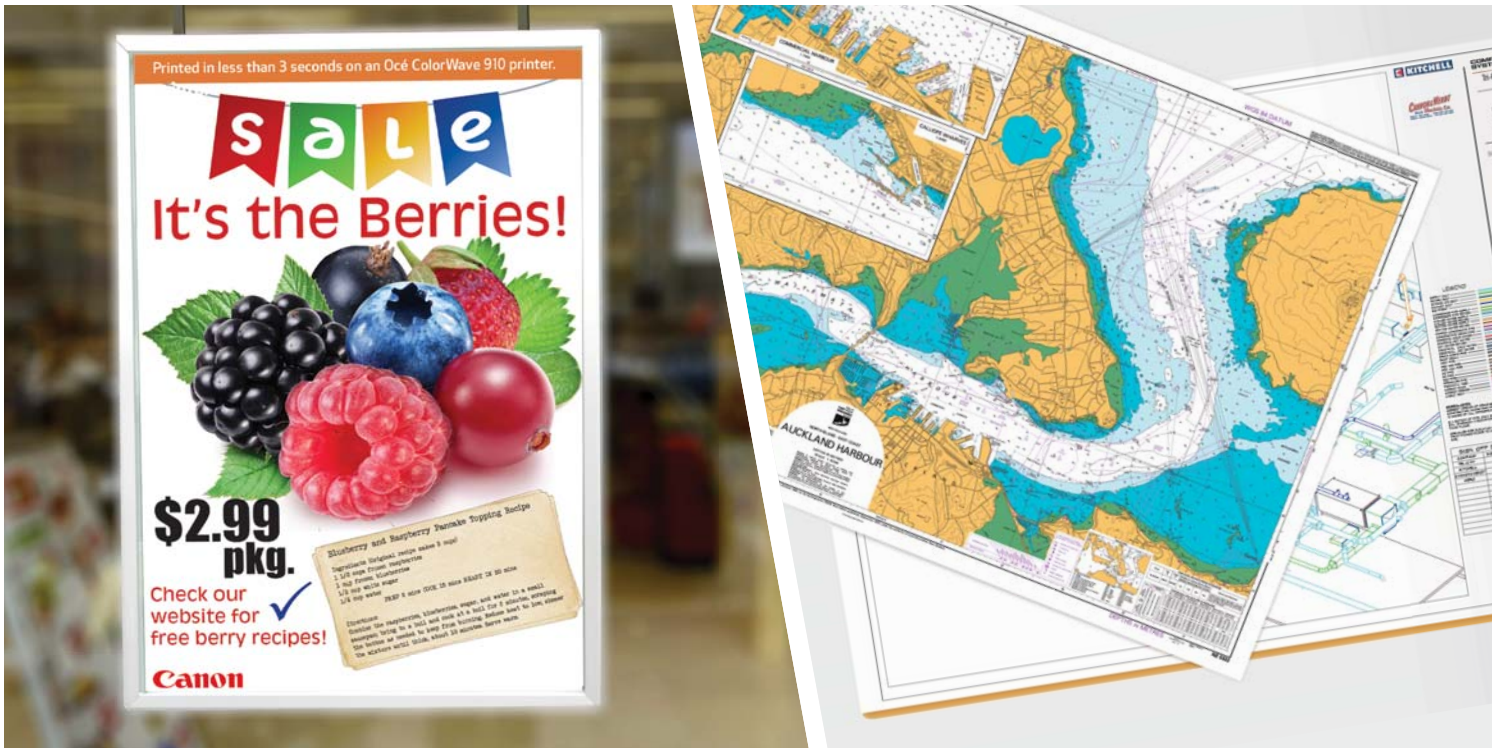


Turn speed into profitability

In the competitive large format print market, staying ahead of the competition is the key to profitability. Staying ahead demands equipment that can quickly and reliably deliver consistent colour at competitive prices.

The fast and durable Océ ColorWave® 910 printer is designed from the ground up to deliver consistent prints quickly, reliably, and at a price that can help you achieve a fast ROI.

When Canon designed the Océ ColorWave 910 printer, we looked across our portfolio of products and incorporated those features that produced the highest levels of productivity. The result is a printer that delivers speed, durability, productivity, and consistency.



Speed

The concept behind the Océ ColorWave 910 printer is to leverage Canon's expertise in developing production print systems and integrate with high speed inkjet printing technology for large format applications. To deliver on this promise of speed, the Océ ColorWave 910 printer incorporates paper handling features from Canon's high volume large format equipment. This results in a machine capable of printing more than 8,000 square feet per hour at a speed of 12 inches per second.

Durability

When you open the papers drawers of the Océ ColorWave 910 printer you immediately notice the durable construction. The Océ line of printers is well known for its reliability and long production life; the Océ ColorWave 910 printer builds upon this reputation. The Océ ColorWave 910 printer is built to last in even the most demanding high-volume production printing environments.

Productivity

Canon focused on creating a high volume device that minimized downtime due to loading paper or unloading finished prints. With up to six 42" x 650' rolls online — or 13,650 square feet — operators will spend minimal time changing rolls. In addition, a dual tray stacker enables operators to unload one job while another is still printing.

Consistency

Designed with exacting specifications, the Océ ColorWave 910 printer utilizes the Océ PowerM® controller to deliver repeatable results. In addition, ONYX® Thrive™ print workflow software can be paired with the Océ ColorWave 910 printer to meet even the most demanding colour requirements.

Whether it is signage, posters, or point of sale materials, the Océ ColorWave 910 printer will elevate your production capabilities to new levels, allowing you to stand out from the competition.

TECHNOLOGY	
Imaging Technology	Single Pass Thermal Inkjet Technology 5 fixed print heads (70,400 nozzles per print head) Highly efficient 1.2 picoliter drop size Up to 1600 × 1600 dpi
Print Speeds	Up to 12 inches per second at 1600 × 800 dpi Capable of producing over 8,000 ft. ² /hour of graphics Produces over 500 24" × 42" high coverage poster per hour
Ink	Large Gamut CMYKK Aqueous Dye, 5 2-Liter Ink Tanks
GENERAL	
Configuration	6-roll printer
Engine Size (W × D × H)	79.5" × 43.3" × 62.2" (2020 × 1100 × 1580 mm)
Engine Weight	882 lb. (400 kg)
Optional Finishing	Océ Dual Tray High Capacity Stacker Océ Estefold 5011 Océ Delivery Tray
Certifications	EPA ENERGY STAR®, TÜV GS, CETECOM, CE, UL, cUL, CB, FCC Class A, FEMP
MEDIA HANDLING	
Number of Media Rolls	6 auto-switching rolls
Max Roll Length	650 ft. (200 m)
Roll Width	11–42" (297–1067 mm)
Paper Weight	20–46 lb. (75–190 g/m ²)
Maximum Roll Diameter	7.1" (180 mm)
Media types	Uncoated paper, surface-treated paper, coloured paper, coated paper, photo paper, polypropylene, backlit films, self-adhesive vinyl, self-adhesive paper, blue print paper
CONTROLLER	
Description	Océ POWERsync controller
Operating System	Microsoft® Windows® 8 Embedded (64-bit)
Hardware	Intel® Core™ i7, 16 GB DDR3 DRAM, 3 × 500 GB Hard Drive, 10/100/1000 Base-T
Page Description Language	Adobe® PostScript™ 3 / PDF1.7 / Adobe PDF Print Engine 3 (APPE 3)
ENVIRONMENTAL	
Ozone Emissions	Zero
Power Requirements	100–240 V; 50/60 Hz Electrical connections (3 × Nema-5-15R wall sockets)
Power Consumption	Off: less than 0.5 W, Ready: less than 100 W, Active: less than 400 W
Operating Temperature	15–30 deg C (recommended: 20–27 deg C)
Operating Humidity	20–80% RH (recommended: 30–60% RH)
WORKFLOW	
Printer Drivers	Océ PostScript 3 driver
Job Submission	Océ Publisher Express Océ Publisher Select™ 2 ONYX Thrive 11.1.2 Océ RePro Desk® 2.5.3
Accounting	Standard: Express Web Tools, Optional: Océ Account Console
Operator Interface	Local job management, printer status, and maintenance control

ABOUT THE PROFESSIONAL PRINTING SOLUTIONS GROUP.

The Professional Printing Solutions Group (PPSG) is a division of Canon Canada. Formed in January 2014 after Océ-Canada Inc. was amalgamated by Canon Canada Inc., PPSG is the leading provider of printing solutions for professionals. PPSG's product offerings include digital presses, high speed digital production printers, wide format printing systems and workflow software for transaction, direct mail, graphic arts, technical documentation and colour display graphics.

ABOUT CANON CANADA INC.

Canon Canada Inc., a wholly owned subsidiary of Canon U.S.A., is a leading provider of consumer and business-to-business digital imaging technology solutions. Innovation and cutting-edge technology have been essential ingredients in Canon's success. Its parent company, Canon Inc., ranks among the Top 4 in US patents registered since 1994. Canon ranks among the world's Top 30 brands and is one of Forbes' Magazine's World's Most Admired Companies. Canon Canada Inc. is committed to the highest level of customer satisfaction and loyalty, providing 100 per cent Canadian-based service and support for all of the products it distributes. Canon Canada Inc. is dedicated to its Kyosei philosophy of social and environmental responsibility.

The Canon logo is displayed in a bold, red, serif font.

Because It Counts

PROFESSIONAL PRINTING SOLUTIONS GROUP

4711 YONGE ST., SUITE 1100,

TORONTO, ON M2N6K8

1-800-668-1945 | 416-224-5600

PPSGinfo@canada.canon.com CANON.CA

Océ, Océ ColorWave, Océ PowerM are registered trade-marks of Océ-Technologies B.V. in Canada.
Océ Repro Desk, Océ Color Image Logic, Océ TC4, Océ Publisher Select, Océ Publisher Express, Océ Express Webtools, Océ Account Console are trade-marks of Océ-Technologies B.V. in Canada.

CANON is a registered trade-mark of Canon Inc. in Canada.
All other referenced product names and marks are trade-marks of their respective owners and are hereby acknowledged.
© 2015 Canon Canada Inc